

The GRETA BUNYIP

“YOUR GRETA & DISTRICT COMMUNITY NEWSLETTER”

gretabunyip@gmail.com

EDITION NO: 63

Oct 2021



New Grant funding for landholders along 15 Mile Creek and Boggy Creek.

We are very excited to announce that we have just received funding via two grant streams for works on 15 Mile Creek and Boggy Creek (and associated tributaries) totalling \$100 000 over the next 12 months.

The programs will allow landholders to obtain assistance for works on their waterway frontage including weed control, pest animal control (deer and feral pigs), fencing and revegetation. Contributions will be required for some activities (e.g. 30% landholder contribution towards blackberry control, \$0.50/plant towards revegetation).

The weeds targeted by these programs must be within the waterway corridor and include (but are not limited to) the following species:

- Blackberry (*Rubus fruticosus*)
- Invasive willow, including seeding pussy willow (*Salix cinerea*) and black willow (*S. nigra*), and crack willow (*S. fragilis*) growing on gravel bars
- Hawthorn (*Crataegus monogyna*)
- Cape broom (*Genista monspessulana*)
- Sweet Briar (*Rosa rubiginosa*)
- Box Elder (*Acer negundo*)

Site plans will be developed for each participating property and contractors will be engaged by the Landcare Group to commence weed control and pest animal control from November 2021 to April 2022. Both grants have very short timelines and so we need to commence site investigations as soon as possible.

For those interested in participating, please call Sally Day on 0437 136 162 to talk about the program or email sally.day@gretalandcare.org.au to receive more detailed information about the grant conditions and timelines. For many years we have had very little funding to assist our members with improvements to their creek and river frontages and so we would encourage you to act and make the most of this funding opportunity.

This project is supported by funding from the Australian Government through the Murray Darling Basin Authority's Healthy Rivers Program and Landcare Australia's Bushfire Recovery Grant Program.





On behalf of the Greta Cricket Club we hope that all of you are looking after yourselves and supporting those close to you during these difficult times.

Over the off season we have had quite a bit of player movement, as players look for success elsewhere in the higher grades. However, it is as important as ever to keep the Greta Cricket Club going. Not only for the playing group but the wider Greta community. Our focus this season will be to continue the development of our junior players and to make cricket enjoyable for all.

This season the club will be fielding teams in the following grades:

- B grade
- C grade
- Under 16's
- Under 14's
- Under 12's

In regards to training:

- Seniors will begin training on Thursday the 7th of October starting at 5:30pm at Greta
- Juniors have commenced training already and train Thursday evenings at Greta starting at 4:30pm

Round one is scheduled for Saturday the 16th of October when both B and C grades will take on City Colts (dependent on covid restrictions being lifted).

We would like to thank the following local businesses for sponsoring our club for the upcoming WDCA season.

- INeeta Café
- Moyhu Hotel
- A & E Weeds

Please ,when things begin to open up, grab a coffee, stop for lunch, or book in for dinner. It is important that we support our local businesses, especially those that support our fantastic club. We will endeavour to have a number of social events throughout the season to support our sponsors. Thank you to Andrew Wheelens who continues to do an amazing job on our ground. The Greta Recreation Reserve is currently undergoing some major pitch works, so let's continue to support Andy.

Finally, as a local who has grown up in the district, the Greta Recreation Reserve holds many special memories. A lot of the friendships that I have developed and the connections I have made have come through either the Greta Football & Netball Club or the Greta Cricket Club. It truly is the heartbeat of the Greta community. So, if you are a junior who is looking to start your cricket journey and make some new friends along the way or a senior cricketer who loves the game and the social aspect that cricket brings, please do not hesitate to get involved. We are always looking for new players and supporters.

If you are interested in getting involved please contact

Dave: 0427 867 353

Lachlan: 0432 623 790

"Let's keep the history going"



Home of

THE MIGHTY BLUES

#GRETAFC #GRETA2021



2021 The Topsy Turvy Year

The first half of the 2021 OKFNL season is one to remember. Beautiful days, big crowds and everyone raring to go after an 18 month break.

It all went pear-shaped when the dreaded lockdowns started happening mid season and it then went from big crowds to no spectators in rounds 18 and 20. The Blues supporters cheering the teams on were definitely missed.

We were so excited that three of our teams made it into the Finals. A Grade, the reigning premiers were more than ready to defend their flag. C Grade was in there with a shot. The Seniors were so determined to bring the flag home.

And then, we were all devastated when late Friday night, on the eve of the Elimination Finals, all matches for the weekend were cancelled due to another lockdown. Following on from this, the 2021 OKFNL season was unfortunately discontinued.

On the social scene, the postponed Presentation Night will now become Presentation Day in conjunction with the long overdue Silver Circle.

These two events will be held at the Home of the Mighty Blues, as soon as we are able to host the events. Keep an eye on the Greta Facebook page and the Greta Team App for more information.

Onwards and upwards from here! On a brighter note, the Committee has already commenced preparing for the 2022 season.

The Committee is pleased to announce that Greg Newbold will continue on as Senior Coach for 2022. Greta signings for footballers have commenced. The netball coaches will be announced in mid October.

All going to plan, the Greta FNC AGM is scheduled for Tuesday 16 November 2021 at 7.00 pm at the Greta Sporting Complex. This date will be confirmed on the Greta Facebook page and the Greta Team App. If anyone is interested in joining the Committee or becoming a Club volunteer, you are most welcome to join us at the AGM.

And, a big thank you to everyone associated with the Greta Football & Netball Club.

Go Blues ...

GRETA VALLEY PS

Enrolments are now open for new students for 2022.

Contact Howard Gibson on 57 666 344



THERE ARE NO LIMITS FOR THOSE WHO TRY



Dear Artists, Friends & Supporters,

It is with sadness and more than a little frustration that we advise you that King Valley Arts has reluctantly decided to cancel the 2021 King Valley Art Show.

Making this decision was hard after we had moved the show from June to October/November to avoid just this eventuality.

King Valley Arts is exploring ideas for small scale art events or shows in the first half of 2022. We will let you know more once sufficient planning has taken place and we have reasonable confidence that sudden lockdowns are unlikely.

Please know that our 2022 King Valley Art Show will take place over Melbourne Cup Weekend. This will be Friday 28 October to Tuesday 1 November 2022.

The KVA committee wishes you enjoyment and satisfaction in your artistic endeavours for the remainder of 2021 and onwards.

Please stay well and we look forward to showing you all the wonderful works in the 2022 Art Show.

Warm regards

Anita Laurence Karen Eastwood Michael Ashby
President Vice President Secretary

Rowena Tainton
Treasurer

King Valley Arts Inc.

GRETA CFA UPDATES

To prevent haystack fires:
Ensure hay is fully cured before baling
Know the history of the hay you purchase
Keep haystacks to a limited size
Store:

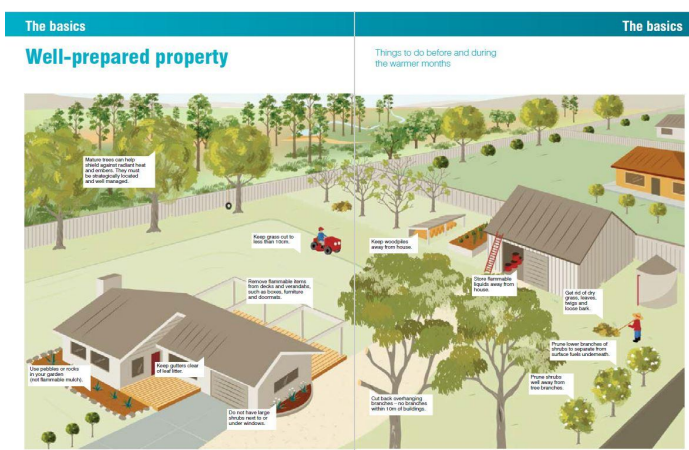
- In separate stacks
- In a number of places away from key assets
- Away from possible sources of ignition (roadsides, powerlines workshops and vegetation). Never store vehicles, machinery and equipment in your hayshed - there is increased risk of losing both hay and machinery
- In areas that are not likely to flood and in sheds that are in good repair to minimise the moisture content

If hay gets too hot

- Spread out the stack to allow it to cool.
- Don't walk on top of hay that is heating as it may collapse or ignite.
- Don't feed to animals. The heating process reduces the nutrient quality of the hay.

For more information go to <https://www.cfa.vic.gov.au/plan-prepare/how-to-prepare-your-property/farms/hay-and-harvest-fire-safety>

Paul McCallum
Greta CFA Community Safety Liaison Officer



A Time for Perspective – Imagine you were born in 1900

Having perspective is good, but using it is better.

We probably all think that it's a mess out there now. Hard to discern between what's a real threat and what is just simple panic and hysteria.

For a small amount of perspective at this moment, imagine you were born in 1900. Many would think that that was a pretty simple time of life. Then on your 14th birthday, World War I starts, and ends on your 18th birthday. 22 million people perished in that war, including many of your friends who volunteered to defend freedom in Europe.

Later in the year, a Spanish Flu epidemic hits the planet and runs until your 20th birthday. 50 million people die from it in those two years. Yes, 50 million. On your 29th birthday, the Great Depression begins. Unemployment hits 25%, the World GDP drops 27%. That runs until you are 38. The country nearly collapses along with the world economy. If you were lucky, you had a job that paid \$300 a year, a dollar a day.

When you turn 39, World War II starts. You aren't even over the hill yet, but don't try to catch your breath. If you lived in London, England or most of continental Europe, bombing of your neighbourhood, or invasion of your country by foreign soldiers along with their tanks and artillery was a daily event. Thousands of Canadian young men joined the army to defend liberty with their lives. Between your 39th and 45th birthday, 75 million people perished in the war.

At 50, the Korean War starts. 5 million perish. At 55 the Vietnam War begins and doesn't end for 20 years. 4 million people perished in that conflict. On your 62nd birthday there is the Cuban Missile Crisis, a tipping point in the Cold War. Life on our planet, as we know it, could have ended. Sensible leaders prevented that from happening.

In 2020, we have the COVID-19 pandemic. Thousands have died; it feels pretty dangerous; and it is. Now think of everyone on the planet born in 1900. How do you think they survived all of the above?

When you were a kid in 1965, you didn't think your 65-year-old grandparents understood how hard school was, and how mean that kid in your class was. Yet they survived through everything listed above. Perspective is an amazing art. Refined as time goes on, and very enlightening. So, let's try and keep things in perspective. Let's be smart, we are all in this together. Let's help each other out, and we will get through all of this. In the history of the world, there has never been a storm that lasted. This too, shall pass.



Author unknown, possibly a Canadian source in 2020.

Supplied by Joan Ellis.

FLANIGAN CONTRACTING

**Your Local Agricultural Contractor
Offering: -**

- Round Bale Hay and Silage
- Fine Chop Pit Silage and Cartage
- Loader Wagon Pit Silage
- Boom Spraying
- Sowing

Call Scott - 0427 950 891

RURAL FENCING & FARM MAINTENANCE

GEOFF WHITE 0432 132 135
Specialising In All Types of Fencing

Post & Rail

Stock Yards

Horse Yards & Arenas
All Welding

General Farm Maintenance

geoffwhite.fencing@hotmail.com

25 Dundas Lane Greta West



TANNER TRANSPORT

YOUR LOCAL LIVE STOCK CARRIER

CALL GREG FOR
ALL YOUR LIVE
STOCK
TRANSPORT
NEEDS

0412 726 410



Wangalla Hay sales



Purpose Grown weed free pastures
Suitable for horses.

- 5x4 Rolls Rye/Clover mix (80/20%)
- 5x4 Wheaten Rolls
- 5x4 Oaten Rolls
- Small squares Rye/Clover mix (80/20%)
- Small squares pure Clover

All hay is weed free.
Shedded & Covered after baling.



Ph: Adam
on
0427549640

YOUNGER'S LAWN AND WOOD

1291 Wangaratta Kilfeera Rd
Greta Vic 3675
03-57276200, 0407-516221

Excavator Hire

Dam and Drain Cleaning
Heavy Earthworks

Grass Slashing

Fire Breaks, roadsides,
paddocks & yards

Backhoe Hire

Trenches, culverts, tree & stump removal,
livestock burial

Firewood Sales

Redgum, Common Hardwood, Splitter Hire,
Delivery Available,
Orders Taken Now

We also install and service Garage Door and
Remote Control Units

FREE QUOTES

For all your needs contact Ned

Fresh Touch
PAINTING
& DECORATING



*Painting with that
Special Touch*

Phone Diane

0402 163 185

**ROCK
RIDGE**

PORTABLE SAWMILLING

TURN YOUR LOGS INTO TIMBER

Timber slabs

Kiln drying

Surfacing slabs

Moulding - floorboards, decking,
arcs etc.

Call Mal on 0428-574392

www.rock-ridge.com.au

**CLARINDA
CHAROLAIS**

Introducing the Future

Clarinda Downtown Q32 (AI)(P)

"Homozygous Polled with growth"

**TOP 1% EBV: Gestation Length,
200Wt, 400Wt, 600Wt, Carcase Wt**

TOP 5% EMA

Sire: JWX DOWNTOWN 7C (P)

Dam: LANGI GHIRAN ELOISE 6 (P) (Pinay x M6 Gridmaker 104)



Enquiries & Inspection always welcome

Ken & Georgie Manton

Mobile: 0437 585 605

Email: ken.manton@hotmail.com

414 School Road, Hansonville Vic 3675



SEMEN AVAILABLE



Vendors at the Southern Charolais Breeders Sale
Thursday 18th March 2021
Yea Selling Complex, Yea Victoria

**PLEASE SUPPORT OUR LOCAL SPONSORS.
THEY KEEP THE BUNYIP GOING.**