

# The GRETA BUNYIP

"YOUR GRETA & DISTRICT COMMUNITY NEWSLETTER"

[gretabunyip@gmail.com](mailto:gretabunyip@gmail.com)

EDITION NO: 46

December 2018

## CALENDAR OF LOCAL EVENTS

**Dec Sun 16th** Christmas Carols, 7.45pm Hall  
**Thur 20th** Greta Valley P.S. Concert 7.00pm  
Mollyullah Hall

**Jan Sat 26th** Australia Day Celebration, 10.00 am  
Greta - Hansonville Hall

## GRETA AUSTRALIA DAY CELEBRATION

Once again the Greta community will celebrate Australia day at the local hall. The day will begin at 10.00am. Following a short formal celebration guest will be offered a luscious morning tea and time to catch-up with friends, old and new.

This year there will be a photographic display. If you have photos you could lend us, please contact David Dinning, 57 276 355 or Kris Porker 57 666 417. Sporting teams, school photos, local events, working bees, natural happenings - anythings that might prompt discussions, memories or a smile.

## GRETA HERITAGE GROUP

**Save The Date:** The Victorian Police Historical Graves Committee will dedicate a restored grave for Constable Duff who was killed in a horse accident in the 1870s while stationed at Greta and unveil an additional plaque at the Greta Public Cemetery on Wednesday, February 20, 2019 at a time yet to be notified.

Go to the Greta Heritage Group Facebook page or watch the Chronicle for further information on this day.

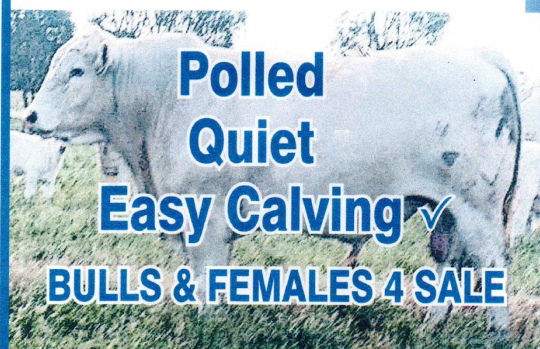
## GRETA-HANSONVILLE HALL

**Save the Date:** Following on from the successful Kelly themed day this year, the Greta-Hansonville Hall Committee are planning a day focusing on the Kelly armour on Saturday February 23, 2019.

Further details will be available at a later date. Contact 0427 276 372

# CLARINDA CHAROLAIS

## X 4 More Beef



**Polled  
Quiet**

**Easy Calving** ✓

**BULLS & FEMALES 4 SALE**

**KEN & GEORGIE MANTON**

414 School Road, Hansonville 3675

Mob **0437 585 605.**

Email. [ken.manton@hotmail.com](mailto:ken.manton@hotmail.com)

J/12d13381-v12/3617

# GRETA VALLEY LANDCARE GROUP DECEMBER NEWS



## Merry Christmas from the Greta Valley Landcare Group

We would like to take this opportunity to wish everyone in our community a very Happy Christmas and hope that 2019 brings you much joy and happiness. Enjoy the food and festivities with your families.

### Shade and Shelter Funding

The objective of this project is quite simply to get more vegetation planted on farms. Our changing climate means that we need more shade and shelter to buffer the extreme weather events like the recent cold snap.

We need to start NOW to address shade on farms. We will be fencing this summer/autumn and planting next winter. Have a good think about the shade and shelter needs for YOUR property.

Project ideas will be accepted until Christmas and successful projects will be offered funding early in 2019. We also have the opportunity to apply for more funding in January so please get your project ideas to us.

Please contact Sally Day our Group Project Officer on 0437 136 162 or [sally.day@gretalandcare.org.au](mailto:sally.day@gretalandcare.org.au) for further information on how to apply.



### EVENTS 2018

**Spectators Welcome**

### DECEMBER

**6<sup>th</sup> & 14<sup>th</sup> - Test & Tune Cars** – open to public for testing

**4<sup>th</sup> – Performance Test Day** – Race Team testing

**1<sup>st</sup> & 2<sup>nd</sup> – HQ 4 Hour Enduro**

**15<sup>th</sup> – WINTON GALA BALL**

**16<sup>th</sup> - Benalla Auto Club Members' Day**

**Enquiries (03) 5760 7100**

### JANUARY 2019

**27<sup>th</sup> - (Sunday) FUN DAY**

[www.wintonraceway.com.au](http://www.wintonraceway.com.au)



Greta Valley  
**Landcare**  
Group

2018 in review



**400**

PADDOCK TREE  
GUARDS INSTALLED



**10 sites**

MONITORED FOR  
BIRDS SINCE 2016



**1200**

TUBES PLANTED  
OVER WINTER



**4 DAMS**

STOCKED WITH  
SOUTHERN PYGMY PERCH

### WORKSHOPS AND FIELD DAYS

Paddock tree field tour, Chilean Needle Grass, Queensland Fruit Fly, Nest box monitoring, Kangaroo and deer management, Southern Pygmy Perch, Native pollinators & Shade and shelter for livestock

**8**

**\$168,000**

in funding received by the group to run events and subsidise onground works over the next 2 years

**11**

MEMBERS WITH  
COLOUR A1  
PROPERTY PLANS



NEWSLETTER  
DISTRIBUTED  
MONTHLY

**16**

NEW  
MEMBERS



STARTED A NEST BOX MONITORING  
PROGRAM ACROSS THE CATCHMENT

Ring Rho Fry (President) on 0402 597 897 for further information



The Greta Football & Netball Club AGM was held on Tuesday 13 November 2018 and was well attended by Club Members.

The 2019 Greta FNC Committee is as follows:

**President:** Kevin Naish  
**Senior Vice President:** Gary Hogan  
**Junior Vice President:** Craig Grant  
**Secretary:** Gigi Costenaro  
**Treasurer:** Darren Ross

**General Committee Members:**

Andy Wheelens  
David Wilson  
Greg Brown  
John McCarthy  
Julie Lewis  
Lindsey Humphries  
Mick Reidy  
Paul Ellis  
Sean Ginnivan  
Tracey McKinnon  
Vanessa Grant

Pre-season training has commenced, as well as preparation for the 2019 season.

The Greta Football & Netball Club would like to extend to you all, a Merry Christmas and a Happy & Safe New Year.



*Septic tank pump outs*

- *Treatment Plant pump outs*
- *Triple interceptor pump outs*
- *Portable toilet pump outs*

*Fast professional service  
Operating out of Benalla  
Servicing all surrounding areas  
Call today  
0447 521 981*



**PORTABLE SAWMILLING**

**TURN YOUR LOGS INTO TIMBER**

Timber slabs  
Kiln drying  
Surfacing slabs  
Moulding - floorboards, decking,  
arcs etc.

Call Mal on 0428-574392  
[www.rock-ridge.com.au](http://www.rock-ridge.com.au)

## YOUNGER'S LAWN AND WOOD

1291 Wangaratta Kilfeera Rd  
Greta Vic 3675  
03-57276200, 0407-516221

### Grass Slashing

Fire Breaks, roadsides,  
paddocks & yards,

### Backhoe Hire

Trenches, culverts, tree & stump removal,  
livestock burial

### Firewood Sales

Redgum, Common Hardwood, Splitter Hire,  
Delivery Available,  
Orders Taken Now

We also install and service Garage Door and  
Remote Control Units  
**FREE QUOTES**

For all your needs contact Ned

## MOYHU OCCASIONAL CARE



We provide quality care for groups of up to 15  
children of mixed ages  
The program operates on Fridays from 9am to  
2pm during the school terms  
Located in the Moyhu and District Preschool  
building  
1 Byrne Street Moyhu 3732  
For more information please phone 03 5727  
9346

[moyhu.occ.care@gmail.com](mailto:moyhu.occ.care@gmail.com)

MYRRHEE SCHOOL PRESENTS

# EXPO: SCIENCE!!

MONDAY 17TH DECEMBER

FROM 6.30PM

AT MYRRHEE HALL

LIGHT SUPPER SHARED

AWESOME

MUSIC

SANTA VISIT

CHRISTMAS  
CHEER

SURPRISING TRICKS

EXPERIMENTS

FUN DEMONSTRATIONS

CHEMICAL REACTIONS

EXHIBITS

BOOM!

BOOM!

## Christmas Carols

At the Greta-Hansonville Hall  
Sunday 16<sup>th</sup> December  
At 7.45 p.m.  
Speaker: Rev Veronica Bradley



There will be opportunity to place a gift  
under the Christmas tree for those less  
fortunate than ourselves.

An offering for the Christmas Bowl  
Appeal will be received

Supper provided  
Everyone is welcome

GRETA VALLEY PRIMARY SCHOOL

*Presents*



The 2018 End of Year

## CONCERT



THURSDAY 20<sup>th</sup> DECEMBER  
7.00PM

MOLYULLAH MEMORIAL HALL  
115 Centre Rd MOLYULLAH



Again, Santa will arrive on the night to collect gifts from families to donate to charity for those families less fortunate in our community



This term everyone from Greta Valley P.S. enjoyed a very busy, 3 day camp to Echuca. Highlights included Kyabram Fauna Park, exploring Echuca and it's rich history, a paddle steamer ride on the Murray River, Gravity Shack and Twisted Science. On Friday last week we had Grandparents visit, which as always creates loads of excitement for our students and a lot of fun and laughs for our treasured visitors.

Our students have been rehearsing for our **School Concert** which is on **Thursday 20<sup>th</sup> December, 7.00pm at the Molyullah Hall.**



## THREATENED STRIPED LEGLESS LIZARD FOUND IN THE GRETA VALLEY

The Striped Legless Lizard, or 'squeaker', is a ground-dwelling, snake-like lizard that inhabits grasslands and grassy-woodlands of south-eastern Australia. It is listed as Threatened with extinction by both the Victorian and Australian governments.

There are only a few records of the Striped Legless Lizard in north-east Victoria, all from the 1980s and early 1990s (Benalla, Wangaratta, Markwood) and it was feared that the species might be locally extinct. A survey in 2017 of 83 landholders across north east Victoria and field visits to 17 of those sites failed to locate any Striped Legless Lizards. But in the last 12 months, a landholder in Greta West and another from Wooragee, found Striped Legless Lizards on their properties – and took photos! Fantastic finds and an important first step to understanding the species' conservation status in the north-east. Now, we're asking Greta district landholders to help answer these questions:

- Has anyone in the Greta district seen a legless lizard in recent years?
- How widespread are Striped Legless Lizards in the Greta district?
- Do both Striped and Olive Legless Lizards occur in the Greta district?

There are several different legless lizard species occurring in the north east, as well as several types of small snake that could be mistaken for a legless lizard. In contrast to snakes, legless lizards have ear openings and fleshy tongues; their bodies are stiffer, less flexible than snakes; most similar sized snakes have a distinctly black head.

Particularly confusing is the similarity between Striped and Olive Legless Lizards. Though most Striped Legless Lizards have lighter and darker brown stripes along the body, some individuals don't, which make them look almost identical to the Olive Legless Lizard (see brochure). More information can be found in the enclosed brochure and at <https://goulburnbrokendelmairpar.wordpress.com/>

Both Striped and Olive Legless Lizards shelter under logs, rocks and tussocks and hunt insects like grasshoppers, beetles and moths. Sometimes, when disturbed in its underground burrow, it gives a loud and characteristic 'squeak'. During early settlement such open country was quickly utilized for grazing and even cropping. In more recent times, this 'better country' has been further improved with pasture grasses, soil cultivation, fertilizer and removal of surface rocks and woody debris. Unfortunately, each of these 'improvements' is another nail in the coffin for legless lizards. That's why they tend to turn up in the 'back paddock', or along the creek, where they can still find shelter and food.

If you think you might have seen a legless lizard on your property, take several photos (body, head, different angles) if you can, take note of where you saw it and contact Sally or Bertram.

Thank you for your participation.

Sally Day  
Greta Valley Landcare  
Contact: 0437 136 162

Bertram Lobert  
Trust for Nature  
Contact: 0409 433 276



## Invitation to a Celebration of the Feet

**Need some exercise?  
Like to Dance?  
Have we got an  
idea for you!**

The Lima South Dance is held on the second Saturday of the month in the Lime South Hall. People travel up to 100 km, sometimes more, to partake in romantic old time dancing. The ladies dress up in all their finery, smart dresses and skirt & diamanté top combinations.

The steps take a little time to learn, but many of the dances cross over so mastering all the steps is not too difficult. And Dancing exercises the body and mind, and being good fun it boosts the spirit as well.

Thanks to a hard working committee, the music is all organised, notices are given to each dance, and a delicious supper is on hand to provide you with all the energy you need.

### **The Lima South Oldtime Dance needs your help.**

Numbers are slowly dwindling, and there is the real possibility that the dance may not be able to continue. Times were there were dances in Molyullah, Warrenbayne, Tatong, Moorngag and other neighbouring localities.

Lima South is the only Oldtime Dance still running, but to continue to do so it needs your help. And if it doesn't, then the future of the Lima South Hall will be in question.

So, come along, move those feet to the beat, improve your health, meet friends old and new, and create some wonderful memories. In short, come along and have a good time!

**Need more information? Contact Colin Gordon on 5768 2561.**



## Permie Ponderings

by Woz - [www.benallapermaculture.org](http://www.benallapermaculture.org)

Permaculture as a design system has been around for over 40 years now, a product of the collaboration between Bill Mollison and David Holmgren. In terms of strategies and techniques there was very little that was new, in fact Mollison himself is known to have said repeatedly, "There is nothing new in Permaculture!" Indeed these strategies and techniques have been around for a long time, often centuries or millennia. What was and still is new about Permaculture is the bringing together of all these strategies and techniques into a Functional Design system. But even then, defining Permaculture is a nigh impossible task. Some colleagues and I were asked the question, "How would you explain Permaculture to a non Permaculture type person?" It is often said that if you ask five Beekeepers the same question, you will get six different answers, possibly more, and sometimes the same is true for Permaculturists. Discussing this it became evident that there are many viewpoints as to the make-up of Permaculture, each predicated on an individual's needs and experiences.

Permaculture is such a flexible design system that it presents what is needed to each situation and thus also presents differing experiences to individuals. And therein lies the challenge - how to express such a versatile and powerful concept to those with no Permaculture knowledge or experience. One of my colleagues then offered, "It's how you think." Hmmm, ponder, ...

And that is the key. Permaculture is a design system using Ethics and Principles to formulate a series of Tactics, Strategies and Techniques to achieve the desired result. BUT, it requires a different way of thinking. The world is still following one form of thinking; economy, fossil fuels, compartmentalisation, and so on. To change, we need to change our thinking. Permaculture is often seen as a way of gardening, which is quite understandable as Permaculture started out primarily as an agricultural design system based on observing and using nature's processes. Life on earth is dependant on energy that ultimately comes from the sun, plants and gardening are a vital link in the chain of converting the sun's energy into a form that we can use - fruit, herbs, vegetables, and so on.

But the Permaculture Design System is capable of much more than that, it can also be used to design tangible structures such as houses, infrastructures such as transport and communications, and intangible structures such as communities and financial systems. **Permaculture! It's about design, and it changes the way you think!**



## Prepare your property

Summer is here, now's the time to make sure your property is fire ready.

Keep grass short, shift woodpiles well away from your house, and cut back overhanging branches. Replace any woodchip or dry straw mulch in your garden with non-flammable pebbles or rocks. Put in the time now before the hot weather strikes to give your home and assets the best possible chance of getting through a fire.

### Are you ready for grassfire?

Don't underestimate the potential for fast-running grassfires this season\*. At up to 25 kilometres per hour, grassfires can spread fast and threaten lives and homes with little warning. Grass dries out a lot quicker than forest or bushland, so expect fires to start early in the day.

### Three decisions every family should make before fire season

**If you're in a bushfire risk area, there are a few decisions you need to make so that you are ready to leave quickly, calmly and safely on a bushfire risk day.**

**First** – decide on your trigger to leave early. Get to know the Fire Danger Ratings – they tell you what action to take (and when) to stay safe.

**Second** – decide where you'll go when you leave early – it could be to a relative or friends' house or a shopping centre.

**Third** – think about what you'll take with you. Make sure important things are ready to go when you are.

\*To find out more about planning for bushfire, go to [cfa.vic.gov.au](http://cfa.vic.gov.au).

### GRETA FIRE BRIGADE:

Mal Dinning - Captain: 0428 574 392

Rod Hooper - 1st Lieutenant : 0431 148 177

David Salau - 2nd Lieutenant: 0408 387 582

## Mature trees

Mature trees can help shield against radiant heat and embers. They must be strategically located and well managed.

## Remove Flammables

Remove flammable items from decks and verandahs, such as boxes, furniture and doormats.

## Keep grass short

Keep grass cut to less than 10cm. Fire can ignite and travel quickly through long grass.

## Woodpiles

Keep woodpiles away from the house. Stray fire embers can easily ignite woodpiles.

## Store Flammables

Store flammable liquids away from house. Where possible, store in flame proof containers.

## Leaves and Twigs

Get rid of dry grass, leaves, twigs and loose bark.

## Prune shrubs

- Prune lower branches of shrubs to separate from surface fuels underneath.
- Prune shrubs well away from branches of mature trees

## Cut back branches

Cut back overhanging tree branches close to property – no branches in 10m space.

## Garden beds

Do not have large shrubs next to or under windows.

## Pebbles and rocks

Use pebbles and rocks in your garden (not flammable mulch).

## Roof gutters

Keep gutters and roof areas clear of leaf litter.





# ARE YOU PREPARED FOR GRASSFIRE?

## The basics

## The basics

### Well-prepared property

Things to do before and during the warmer months





## Greta Australia Day Event

The Greta community will meet for a short formal celebration followed by morning tea, a photographic display and a chat. Everyone welcome.

DATE: Saturday 26<sup>th</sup> January

TIME: 10.00 am

LOCATION: Greta – Hansonville Hall  
Reserve Rd

For more information: Contact David Dinning 57 276 355  
or Kris Porker 57 666 417  
Email [kiporker@gmail.com](mailto:kiporker@gmail.com)

